



A View from County Hall



North Yorkshire Council covers the largest geographical area in the country, and I am very much aware of this when making decisions. It is for this reason we avoid trying to take a “one size fits all” approach. At our July executive meeting, an ambitious new approach to

managing speed limits across the county was debated and approved. The strategy follows an extensive review of the council’s 20mph limit and zone policy, approved in January 2022. The new approach will work with local communities and their elected representatives from the outset to produce a scheme tailored to the specific location. The strategy will move away from setting speed limits in a blanket fashion, where we look at one road in one location at a single point in time, to a more strategic overview. When looking at road safety, I am always mindful of the three “E’s” which in highways terms should always work in harmony, Education, Engineering and Enforcement. The majority of serious accidents in North Yorkshire do not actually occur in towns and villages but on our rural roads and sadly are most prevalent amongst young drivers and motorbikes.

Issues have been raised with me regarding what local Wolds residents endearingly refer to as the “Old Post Bus”. This transports residents along the top road villages from Foxholes to Malton. I know how important this route is to residents and I am looking into the issues you raise. It’s timely to do so as another large policy update in the pipeline is the Local Transport Plan. The current North Yorkshire Local Transport Plan came into effect in 2016 and our post pandemic way of life now looks quite different. More people are working from home virtually, we are seeing a move to electric vehicles and many residents are taking to their bikes and even Shanks’ pony! The new plan will guide the development and management of travel infrastructure across the county. In a rural area this is always a challenge, several pilots have been trialled, notably “Your Bus” an Uber styled bus transport scheme, but as yet there is no ideal solution. A scheme we can all take a lesson from has to be the Government-supported £2-a-trip ‘Price Drop’ fare cap. Yorkshire bus firm Coastliner who’s network links Leeds with York and the North Yorkshire Coast reports seeing a real boost since the scheme was introduced. Let’s hope it serves to prove a point and will be a positive case of “using it, means not losing it”.

Janet Sanderson

Thornton Dale and The Wolds
Executive Member for Children’s Services
Telephone 01751 474516

Final copy date 18th of the month for the following months issue to:-

Trevor Thomson

Gypsy Cottage, Main Road,
Weaverthorpe, YO17 8EY

Telephone: 01944 738804 or 07972 132158

Email: wddsvallwaywarbler@gmail.com

(DISCLAIMER: Any correspondence/ articles printed in the Warbler are entirely the responsibility of the contributor)

Don’t forget the following Websites :-

Weaverthorpe Parish Council (weaverthorpeparishcouncil.co.uk/weaverthorpe/)

Luttons Parish Council (<http://luttonsandweaverthorpe.ryedaleconnect.org.uk>)

Kirby Grindalythe & Duggleby (<http://kirbygrindalytheduggleby.ryedaleconnect.org.uk>)

Foxholes with Butterwick Parish Council (<http://foxholesbutterwickpc.co.uk>)

Wolds Valley Benefice

Sunday 6th August 10am Holy Communion St Andrew's, Weaverthorpe
Sunday 13th August 8am Holy Communion St Andrew's, Weaverthorpe
Sunday 13th August 10am Holy Communion St Andrew's, Kirby
Grindalythe
Sunday 20th August 10am Holy Communion St Mary's, West Lutton
Sunday 27th August 10am Holy Communion St Peter's, Helperthorpe
Sunday 27th August 5pm Holy Communion St Mary's, West Lutton

**For all enquiries, please contact the Church Wardens
(please see church notice boards for details)**

or Rev'd Nicola Penn-Allison (01944 738540 nicky.allison@outlook.com)
or Rev'd Alison Hutchinson (07816 847271 anhutch@gmail.com)

Driffield & Langtoft Benefice

Wednesday, 2nd August, 9:30 am - NO SERVICE

Sunday, 6th August, 10:00 am - St Mary's, Little Driffield (Book of
Common
Prayer)

Wednesday, 9th August, 9:30 am - NO SERVICE

Sunday, 13th August, 10:00 am - St Peter's, Langtoft

Wednesday, 16th August, 9:30 am - NO SERVICE

Sunday, 20th August, 8:00 am - All Saints', Driffield (Book of Common
Prayer)

Sunday, 20th August, 10:00 am - Tribfest at Sledmere House

Wednesday, 23rd August, 9:30 am - NO SERVICE

Saturday, 26th August, 9:30 am - 'Fellas At Foxholes' at Foxholes
Community
Hall

Sunday, 27th August, 10:00 am - All Saints', Thwing

Wednesday, 30th August, 9:30 am - NO SERVICE

Sunday, 3rd September, 9:15 am - St Mary's, Little Driffield (Book of
Common
Prayer)

Sunday, 3rd September, 11:00 am - St Peter's, Langtoft

Sunday, 3rd September, 11:00 am - All Saints', Driffield (Morning Prayer)

Wednesday, 6th September, 9:30 am - All Saints', Driffield

**All enquiries should be directed to:-
Rev Stuart Grant :- 01377 257712 Mob: 07795 560065**

(Continued on next page)



COFFEE MORNING
Weaverthorpe Village Hall
Friday 11th August
10.00 am to 12 noon

£2.50 choice of cake and a hot drink

Books for sale.
Everyone welcome.



Weaverthorpe Brunch Club
Weaverthorpe Village Hall
Friday 18th August
Two sittings
9.45 and 10.45

Text 07972 132158
or email
weaverthorpevillagehall@gmail.com
Please book by Wed 16th August



Weaverthorpe Village Hall
Wednesdays
7.00pm to 8.00pm
Phone Charlie on 07746 485138



WEAVERTHORPE
BRANCH
Weaverthorpe Village Hall

(No meeting in August)

Tues 12th September 7pm
BBQ & Pickering Pop Ukuleles.
Everyone welcome.
Adults £5 Children £3
Details to follow.

All Saints Church, Front Street, Wold Newton

6/8/23 10.00 a.m. Holy Communion, the Rev. B. Hodgson.
20/8/23 10.00 a.m. Morning Service
27/8/23 11.00 a.m. Benefice Service – Holy Communion. All welcome.

All information could alter, so if in any doubt please call one of the churchwardens: Carol 01262 470838 or Julie 01262 470546.

All enquiries should be directed to: Rev Barbara Hodgson – Tel: 01262 675014

Sherburn Methodist Chapel

6th August: Rev Emma Morgan.
13th August: Holy Communion led by Rev Trevor Haigh.
20th August: Service led by the Worship Team.
27th August: Mrs Nikki Warner.
All services begin at 10.30am with Worship Videos from 10.15am.
Refreshments are served in the Hall after the services.
Everybody is welcome to come along.

Midweek meetings:

Monday Bible Fellowship and Prayer from 1.30pm.
Tuesday Coffee Morning from 10am-11.30am This is free but any kind donations for the coffee will be given to Diabetes UK.
Thursday Craft Club from 1.30pm. Just bring your craft along and enjoy a cuppa and a chat whilst you work.
Christmas Shoeboxes: We now have some knitting wool available for hats and mittens etc if anyone would like to knit any to go in the boxes - just ring Christine on 01944 711294.

All enquiries should be directed to: Rev Emma Morgan Tel: 01723 361214

Weaverthorpe Village Hall – Brunch Club



The Brunch Club has been running for over five years and continues to be a popular event for people in the area.

We have recently looked at our costs and have been comparing the cost of the food we provide against prices at the beginning of 2022. The result is that we are paying a staggering 44% over the costs as they were in 2022. We are all being hit by rising prices, but in view of the information above, we are asking all our customers to perhaps reconsider how much you donate for your brunch from now on. We're not asking you to increase your donation by 44%, but a small increase would help us to continue to provide the same quality of food as in the past. We also recognise that not everyone will be able to afford to give more money, and that is fine. Please continue to support us and give whatever you can afford.



Weaverthorpe Village Hall

Bookings

Contact Trevor Thomson
07972 132158
weaverthorpevillagehall@gmail.com

Knit & Natter (Craft)

Tuesday 13.00–15.00
Contact Trish Lake 01944 738752
(Break until September)

Zumba

Wednesday 18.45–19.45
Contact Charlie 07746 485138

Yorkshire Countrywomen

Second Tuesday of the month
Contact Sue Thomson 01944 738804
(No meeting in August)

Coffee Morning

10 am - 12 pm
Second Friday of the month
Books for sale.
Everyone welcome.

Weaverthorpe Brunch Club

Third Friday of the month
Two sittings
9.45 and 10.45
Call/Text 07972 132158
or email
weaverthorpevillagehall@gmail.com

Diary Dates

Village Hall Fundraising

6th October Harvest supper
with Weaverthorpe Church
14th October Jumble Sale
with YCA & Weaverthorpe Church
11th November Quiz night
with Weaverthorpe Church



The 100 Club Draw subscriptions will be due on the 1st September. If you would like to continue being a member please just get in touch.
Tel: 07972 132158 or email:
weaverthorpevillagehall@gmail.com



Weaverthorpe & District Produce Show

Saturday 26th August 2023
at 2.15pm

Weaverthorpe Village Hall

Entries accepted from all residents of Weaverthorpe, Helperthorpe, Butterwick,
Duggleby, East Lutton, West Lutton, Foxholes, Kirby Grindalythe,
Wharram-Le-Street and Wold Newton

Childrens class entries also accepted from pupils attending
Luttons and Wold Newton Schools

Entry Forms and Fees must be received at the Village Hall on Thursday
24th August 2023 between 7pm and 9pm

Exhibits to be staged before 10am on Saturday 26th August 2023

Schedules available from:

Mrs Anne Downes, tel: 01944 738637

Or download from

weaverthorpevillagehall.weebly.com

To Be Held at Weaverthorpe Village Hall:

The Third

Pop Up Restaurant

Saturday 21st October @ 19.30hrs

Set 3 Course Menu:

Prawn Saganaki with Horiatiko Psomi

(Prawns in Tomato and Feta Sauce served with Greek Village Bread)

— o —

Lamb Kleftiko & Stuffed Peppers

(Slow Cooked Lamb and Potatoes—cooked in Parchment Paper)

— o —

Galaktoboureko

(Filo Pastry Filled With The Most Creamy Custard)

— o —

Tea or Coffee & Melomakarona (Honey Biscuits)

— o —

BYO Drinks

Pricing: Any Two Courses—£20: Three Courses £24

All Bookings (with £10pp Deposit Please) Paid by Friday 6th October

Book with Sue Pearce (BACS or Cash) -

Email or call: sue.pearce14@yahoo.co.uk or 0777 2005936.

Max of 24 persons: Min of 2 Courses pp

If there are less than 20 Reservations

the event may be cancelled.

PLEASE NOTE: This is a Charitable Event in Support of Dementia UK



Dog Fouling in Weaverthorpe

Several reports regarding dog waste have been received this month. Generally left on the grassy verges throughout the village and also in the Church yard. On the footpath leading up to the School House alongside Forge House and behind the village Hall. (CCTV is in operation there & you will be caught)

The General Waste bin adjacent to the children's play area was overflowing with dog waste bags & scattered on the green.

A visitor reported being dismayed by the amount of dog waste on the Bridle Path at the end of Ropery Lane, spoiling an otherwise lovely walk in the Wolds Valley.

Dog Waste Bins are sited in the following areas:-

Opposite the Village Green.

At the end of Ropery Lane.

Near to the church.

Even if no-one is watching please pick it up.

Thank you



YOU'RE INVITED
TO AN AFTERNOON
TEA!



Marny & Gill

Invite you to an
AFTERNOON TEA
at
Foxholes Community Hall
Friday 11th August @ 2pm

Tickets:- £8.00

RSVP:-
07748 908102 or 07866 808123



We're fundraising for Breast Cancer Now, the charity that's steered by world-class research and powered by life-changing support.

breastcancernow.org/afternoontea



Breast Cancer Now is a company limited by guarantee registered in England (9347608) and a charity registered in England and Wales (1160558), Scotland (SC045584) and the Isle of Man (1000).



**BREAST
CANCER
NOW** The research &
support charity

August 2023

What's On In West Lutton



Manor Festival Live

August 2023 sees the return of West Lutton's answer to Glastonbury with the return of our very own Festival at Manor Farm on Saturday 26th August 1-6pm

A great day out for all the family there will be Live Bands, Food & Drink & a range of activities. Tickets for Wolds Valley Residents are just £8 11-18's £5 Children Under 11 FREE All tickets are available from Eventbrite.



Our June Walk which took in a 4 Mile circular route from Thixendale.

Coffee Mornings

Join us for a natter with Tea or Coffee & a Bacon Buttie or Vegan Sausage Roll at our Monthly Coffee Mornings.

St Mary's Church
Saturdays 10am-12 noon



Next Coffee Morning
Saturday 12th August
Saturday 9th September



Next Walks
Sunday 27th August
Sunday 24th September

Luttons Monthly Walks

Our friendly group meets outside The Three Tuns or St Mary's Church on the last Sunday of each month at 1pm. Dogs are welcome on a lead. Tea & Cakes in the church afterwards!



The Manor Farm Summer Festival is on and NOW is the time to book. So many people loved last year that we are following a similar format

A main stage in the large rear field, a second stage with open mic sets and workshops near the children's activities area in the front entrance field.

On-site parking £2.00 per car

The usual food trucks, craft stalls, bouncy castle and children's activities with animal petting at designated times.

There is the opportunity to do a slot on the open mic stage at the front or to take part in workshops including céilidh dancing, drumming with other activities in the pipeline.

Tickets and updates can be accessed through: MANORFARMFESTIVAL.EVENTBRITE.CO.UK. Also reach the site through the QR code on the attached poster.

You can bring dogs though you will need to supervise them and they would have to be safe with crowds and children.

Look forward to seeing you on 26th August 1.00 - 6.00.

Don't forget to book your tickets, they are selling fast. Last year we sold out with a number of people hoping to buy in the last week left disappointed.

Big thanks

John Haslam

NOTICE

Luttons Parish Council would like to **donate** items recently bought by the parish council to local community groups for the use and enjoyment of residents of all 3 of the villages the parish council serves.

A large barbecue – Char-Broil Convective 640 Black XL Gas Barbecue

A large marquee – 4 X 10 Meter Premium PVC Marque

2 x George Forman grills. 1 X Large 1 X Medium (removable plates)

If you belong to or run a charity group within the three villages the parish council serves (West and East Lutton or Helperthorpe) and you would like to apply to take ownership of one or more of the items above please write to the Clerk of the Parish council telling the council a little about your community group, if you have a constitution, how this equipment would enhance your offer and please provide proof of public liability insurance and any other relevant information which you believe would be useful in supporting your application, including a brief outline of how monies raised by your events will benefit the wider communities.

Please contact the clerk if you would like anymore details or have any questions ahead of your application.

Anna Wallace. Tel; 07873 309647

Clerk's e-mail: clerkluttonspc@gmail.com

Closing date to register your interest: 10th September 2023.

Decisions about allocation of equipment will be made at the next meeting of the parish council on 28th September and then arrangements for distribution will be made pending proof of valid public liability insurance.

Many thanks. Luttons Parish Council.

Pickering 2023

Model Railway Exhibition

Free Entry for Children*
Working Layouts
Model Making Demonstrations
Hot & Cold Food • Drinks

August 19th & 20th 2023

Memorial Hall, Potter Hill, Pickering. YO18 8AA
10am - 5pm (3.30pm on Sunday)

Adults £6 / Children under 16 free*

*When accompanied by an adult

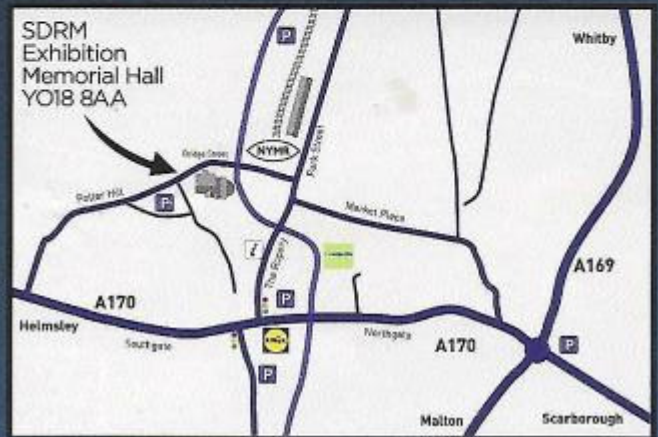


Pickering 2023

Model Railway Exhibition

Memorial Hall, Potter Hill,
Pickering. YO18 8AA

How to find us...



The Cranedale Educational Charitable Trust is an organisation who offer residential trips to school pupils of primary, secondary and A-level age groups. We are a 15-minute drive from Malton.

Vacancies at the Cranedale Centre from September 2023

Cleaner required - to work as part of our small team. Flexible working hours, mostly mornings to early afternoons. £11 per hour Monday - Saturday and £12 on Sundays.

Potwasher required to work mornings 7.15 to 9.15 am and/or evenings 6 - 8 pm. Rate of pay £11 Monday - Saturday and £12 on Sundays.

A uniform is provided and own transport is essential.

Please contact Chris Cassells or Sue Taylor on cranedaleadministration@cranedale.com for an application form.



BBQ to Borrow

Following on from the Queens Jubilee Celebrations in 2022, the Valley was kindly donated a full 'Oil Drum' BBQ.

That BBQ is available for residents of the Wolds Valley for personal or community use.

There is no charge for the use of the BBQ, however, should it be used, we would kindly ask that it is returned in the clean condition it was in when leant out.

To make sure this happens there will be a £10 deposit on any loan - that deposit being forfeited should the equipment require cleaning upon its return.

To enquire as to whether the BBQ is available, please contact Martin Pearce on 07971 963797 or email - martin.pearce54321@gmail.com.

Happy Cooking!!



Ganton Village Hall.
The Wolds Short Mat Bowls
Club.

Tuesday and Thursday, 7pm - 9pm (apart from the third Thursday in each month)

First visit FREE! Why not pay this friendly club a visit?

A game for all ages both male and female. Families are welcome.
No experience necessary.

For further information,
contact Jean, Club Secretary,
07791787693
teddbandme@gmail.com



SUPERMOBILE LIBRARY
WEAVERTHORPE

Your next visit will be on:
MONDAY 31 JULY 2023 10 – 12 noon
FRIDAY 18 AUGUST 2023 10 – 12 noon
MONDAY 25 SEPTEMBER 2023 10 – 12 noon

NB. The date may be subject to change and cancellations at short notice.

If you wish to request a specific title, please browse our online catalogue at <https://capitadiscovery.co.uk/northyorkshire> and place a reservation using your borrower number and your PIN, selecting 'Supermobile' as your pick-up location. There may be a small charge for this service.

Free downloads of eBooks, e-audiobooks and magazines are available from our website at www.northyorks.gov.uk/digital-library

If you are not a member of our libraries, you can join at the Supermobile Library. It is FREE!

For enquiries please call 01609 533878
or email supermobile@northyorks.gov.uk

For more information about library services visit:
www.northyorks.gov.uk/libraries or download our library App.
Search for: North Yorkshire Libraries in App Store of Google Play.



Luncheon Club
Kirby Grindalythe

If anyone would like to reserve a place at the Lunch on Friday 4th August, please contact
John Clegg on
cleggjohn1946@gmail.com.

GARAGE SALE

WETWANG GARAGE SALE

Wetwang Garage Sale takes place this year on Sunday 27th August from 8am until approx 2pm.

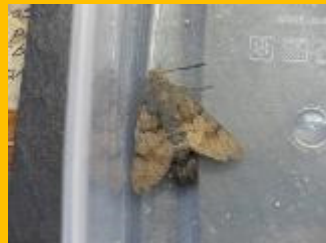
The village hall will be open from 8am for maps and refreshments including our delicious bacon butties!

Dates for Social Activities at Foxholes Community Hall

Every Wednesday Line Dancing 7:00 PM
Every Thursday Art Group 1:00 PM
Every Thursday Short Mat Bowls 7:00 PM
Every Friday Yoga Class 10:30 AM (Contact Matt 07505 203624)
Craft Group (Summer Break until September)
Sat 5th August Coffee Moming & Library 10.00 AM
Mon 7th August Photography Group 7:30 PM
Tue 8th August Whist Drive 7:30 PM
Fri 11th August AFTERNOON TEA in aid of Breast Cancer 2.00 PM till 4.00 PM
Sat 19th August Coffee Moming & Library 10.00 AM
Mon 21st August Photography Group 7:30 PM
Sat 26th August Fella's at Foxholes Breakfast Club 9.30 AM
Tue 29th August Yorkshire Coast Farm Women's Club 7:30 PM

Helperthorpe Bird Notes

An occasional series from a local birder and sound recordist.



Three interludes ... the first swifts ... not those tearing round the rooftops as imagined in the Ted Hughes poem of their name ... 'jockeying across each other ... on their switchback wheel of death' ... that world is known and loved ... these are the birds on visible migration ... arcing and powering over an open space ... 100 in an hour ... brings memories of one brought down in a storm ... clinging with atrophied feet to a bush ... flung it into the air expecting it to lamely fall to earth like a shuttlecock ... thankfully it joined its companions ... the next ... on Filey prom ... cup of tea and a toasted teacake ... watching gannets leaning into the wind before that total commitment to their plunge ... the almost swan like cranking as they wing their way into the air ... finally an absolutely non descript grey moth on a window frame ... it escaped the beer mug trap with an orange underwing ... then it flew ... with a buzz not a flap with a chequered rear ... first time have seen a stationary hummingbird hawk moth ... two at one time in the garden since ...

the bird list has not grown ... though quail ... marsh harrier ... hobby ... are still present ... a number of butterflies have been noted ... ringlet which is a very unobtrusive though quietly abundant species ... meadow brown ... speckled wood ... as regards mammals ... there have been three roe deer fawn about for a number of weeks ... and a rather large person perched behind a parabolic reflector trying to observe them ... thanks to people sending in photos ... one of an albino bird proved bird identification is not an exact science ... even with a group ... thanks to Trevor for being a go-between ...

David Mellor

WOLD NEWTON

ALL SAINTS' CHURCH

The normal pattern is 1st and 3rd Sundays at 10.00 a.m.. Usually the 1st Sunday in the month is Holy Communion.

All information could alter, so if in any doubt please call one of the churchwardens: Anny 01262 470287 or Julie 01262 470546. Alternatively, please check on www.achurchnearyou.com

The church remains open daily for private prayer and contemplation; also for visitors wishing to experience its history and beauty as well as accessing the village Library/Book Exchange. (Light switches to the left of the door.)

MEGA RAFFLE!

(all proceeds to All Saints' Restoration Fund)
WIN A WEEKEND AT HOLLY COTTAGE, WOLD NEWTON, 13th-14th October!!!

Tickets now available for this great prize! £5 per ticket. Includes a welcome hamper!

2nd prize - 2 bottles of wine; 3rd prize - box of Thornton's chocolates.

Weekend is for 2 non-smoking adults.

Tickets available from Anny (01262 470287); Zoe Bryant Hainsworth (Facebook); Margaret (01262 470818) or Amanda (01262 470993).

Buy them before they've gone! Draw September 3rd, 2023

FLOWER & PRODUCE SHOW

71st Annual Wold Newton show.

19th August at the Community Centre - open to the public from 2.00 p.m.

Organiser Mrs. Jean O'Neill, 1 Highfield Close, Wold Newton. (01262 470949)

Closing date for entries 8.00 p.m. Tuesday 15th August.

Schedules and entry forms available from Mrs. J. O'Neill or Mrs. J. Robins on, The Coach House, Back St. (01262 470368)

THE HINGE BOX

This is in the church porch and continues to be very well supported, providing much needed food and essentials for struggling, local families. Based in Bridlington, the Hinge is now receiving more referrals from local authorities and is even busier than it was. All donations are very much appreciated. A can of beans- a bar of soap ... all become major and welcome gifts.

WOLD NEWTON COMMUNITY Facebook GROUP

This continues to provide much needed community information. Books and resources are now based in the church, which is opened every day.

THE COMMUNITY CENTRE

For all information regarding hire of the Community Centre and events there please contact Judith 01262 470368.

Foxholes Community Hall

Autumn Fair

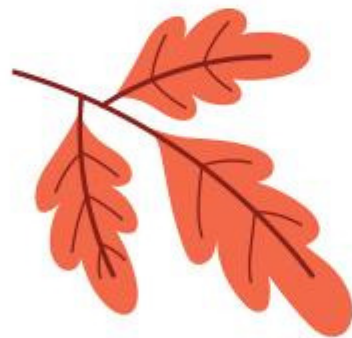
Crafts and refreshments

Saturday 7th October

10-2pm

**Stalls include: Preserves & Pickles,
Homemade Cakes, Gifts & Homeware**

**We have space for more stallholders
£10 per table, please contact us at
events@foxholehall.com**



THWING & OCTON

FUN

SHOW
FETE & CRAFTS

SUNDAY 27TH AUGUST

Field at rear of playground
Octon Road, Thwing
FROM 1PM TO 8PM

FUN VILLAGE SHOW | LICENSED BAR | LIVE MUSIC
SIDE STALLS | MARMADUKE'S MARKET | TOMBOLA
GAMES | PIZZAS | WAFFLES

If you would like a stall to sell your
arts and crafts items contact Al or
Debbie Best 01262 470460



To enter items into the show contact
Chris Oxtoby 01262 470255
Or download the schedule from
[facebook.com/Thwing.events](https://www.facebook.com/Thwing.events)

Brought to you by :
Thwing & Octon Amenities Group

Wintringham Village Hall

Friday 20th October

6.30pm - 11pm



Disco

£10 per ticket to include
HOT SUPPER

Licensed Bar

Fancy Dress Optional

in aid of
Ryedale Dog Rescue

Tickets available from Tracey 07971 316939

PIC•COLLAGE



Snainton Cricket Club
Cricket Day Camp

Tuesday 22nd August

9.30am - 3.30pm

For those age 13 and under
A full day of cricket fun,
activities and games for ALL
abilities

£15 for the day
Refreshments and BBQ
lunch included
(specific dietary requirements
also catered for)

For an entry form or more information
please contact Michelle Maw on
michellemaw@btinternet.com or
07891758892

SHERBURN CAFÉ

OPEN THURSDAY MORNINGS

9.00AM-11.30AM

AT SHERBURN VILLAGE HALL

PLEASE POP IN AND JOIN US

FOR A FRIENDLY CUPPA!

TEA/COFFEE AND TEACAKE £1.50





Sherburn Village Show



Raffle!

Sunday 13th August
Sherburn Village Hall

Refreshments!

Exhibits are to be brought to the hall
10am-11.30am, 20p per entry
(maximum 2 exhibits per class). £1 for
first prize!

The hall will be open to the public
2pm-3.30pm, and prizes will be drawn!
Free Entry!

Schedules displayed in central
stores, post office, doctors or
contact Ali Pickard if you want
one delivered!



Ganton & District Horticultural Association

44th ANNUAL PRODUCE SHOW

Sunday 3rd September 2023

Ganton Village Hall

Show opens 1.30pm, prize presentation 3.30pm

FREE ADMISSION All are welcome

Staging of exhibits:
Sat 2nd 6-8pm Sun 3rd 8.30- 10.00am

For more details please contact:
Iris Hallaways 01944 710507



Hunmanby & District Garden Produce Association Show

Sunday 6th August

Hunmanby Community Centre

Our 76th show

Schedules and entry form can be
downloaded from our website:-
hunmanbygarden.club

Exhibits can be staged Saturday evening
and Sunday morning before 10am for
judging to commence at 10.15.
Show opens at 2pm to all, to view exhibits.



Sherburn Local History Society

Come join us:

- ◆ See fantastic archive documents and photos
- ◆ Illustrated talks with great speakers
- ◆ Visits to places of interest
- ◆ Make new friends
- ◆ Re-live memories
- ◆ Have a cuppa with us

The next meeting will be on:

Monday 4th September @ 6.30pm

AGM

Tea, coffee & biscuits

For more information:

sherburnlocalhistory@gmail.com