

# Warbler



## A View from Ryedale House



August has been a strange month, with extra rules being implemented to help protect us from further outbreaks of Covid 19 but also trying to restart the economy, it has been a difficult balance to achieve. Whilst it is great to see our coastal towns and other beauty spots so busy now that overseas travel has been reduced, along with a much needed boost to the local economy it has not come without problems.

I have received concerns from many residents regarding an increase in litter and a lack of respect for the beautiful country side of The Wolds. These complaints have ranged

from parking issues to an increase in rural crime which is being addressed by both residents and the police.

Another issue facing us as a rural community is the push from Government to become part of a large unitary council. This is not something we can fight against, it will happen but how it happens can be influenced. District councillors from all parties are working together to put forward an alternative to that presented by NYCC to ensure that we do not lose our voice within a much larger authority. I will continue to press to ensure The Wolds is not forgotten.

After numerous Zoom meetings I will be glad to attend a meeting of council in person within the next few weeks. If you have concerns relating to any issue please don't hesitate to contact me.

Stay Safe

Councillor Tracie Middleton

Final copy date 18th of the month for the following months issue to:-  
Trevor Thomson

Gypsy Cottage, Main Road, Weaverthorpe, YO17 8EY  
Telephone: 01944 738804 or 07972 132158  
Email: woldsvallywarbler@gmail.com

(DISCLAIMER: Any correspondence/articles printed in the Warbler are entirely the responsibility of the contributor)



@woldsvallywarbler

## Sherburn and Rillington Flu Clinics



Managing the flu season alongside Covid-19 will be a particular challenge for GP practices. This year to maintain the safety of our staff and patients we are running appointment times only, there will be no drop-in sessions. Patients will need to contact the Practice to book an appointment or alternatively book an appointment online. We are opting to use village halls instead of the surgery so please can you wear facemasks and clothing which can be easily removed or a short sleeved top so the clinician can easily access your arm to administer your flu jab.

Things will look a little different to usual but staff will be on hand to explain any one-way systems or other safety measures. To help reduce queues, please attend as close to your appointment time as possible. You can also help your practice to stay safe by following social distancing measures and following the instructions of practice staff. If you feel unwell with Covid-like symptoms, book a Covid test and do not attend for your flu jab until it is safe to do so.



Our flu clinics will be held at the village halls as follows:

### Village Hall clinics

Tuesday 22nd September 2020 - West Heslerton - 9am-10.30am

Tuesday 22nd September 2020 - Staxton - 11.00am-1pm  
Tuesday 22nd September 2020 - Foxholes - 2pm-3pm  
Tuesday 22nd September 2020 - Weaverthorpe - 3.30pm-5pm

### Sherburn Village Hall

Thursday 24th September 2020 - 9am-2pm  
Monday 12th October 2020 - 12pm-5pm  
Thursday 15th October 2020 - 9am-2pm

### Rillington Village Hall

Monday 28th September 2020 - 1pm-6pm  
Tuesday 13th October 2020 - 1pm-6pm  
Monday 19th October 2020 - 1pm - 6pm



### Don't forget the following Websites :-

Luttons & Weaverthorpe (<http://luttonsandweaverthorpe.ryedaleconnect.org.uk>)  
Kirby Grindalythe & Duggleby (<http://kirbygrindalytheduggleby.ryedaleconnect.org.uk>)  
Foxholes with Butterwick Parish Council (<http://foxholesbutterwickpc.co.uk>)  
All Saints Church, Wold Newton ([www.allsaintschurch-woldnewton.com](http://www.allsaintschurch-woldnewton.com))



t : 01944 738 274  
f : 01944 738 223  
e : [info@lhsleightholme.co.uk](mailto:info@lhsleightholme.co.uk)

Steel fabrication, erection and cladding



Domestic and Commercial work

Fully Insured

Richard Ogden

Tel: (Eve) 01944 738710 (Day) 07747 010777  
Email: [richard@ogdenservices.co.uk](mailto:richard@ogdenservices.co.uk)



Call Tom Garbutt For A FREE Quote  
On 07800 784870 or 01944 738761



Providing quality fuels and lubricants throughout  
North & East Yorkshire for over 25 years

DOMESTIC HEATING OIL

[www.amkfuels.co.uk](http://www.amkfuels.co.uk) - [info@amkfuels.co.uk](mailto:info@amkfuels.co.uk)

Call Andrew, Mavis or James on 01377 229373

With grateful thanks to L.H.Sleightholme for paper and photocopying facilities & Richard Ogden, West Lutton Tom Garbutt, Weaverthorpe & AMK Fuel Services for additional paper supplies.



**++ Food Glorious Food ++**

We are open for food as follows:

Tues 6:30 – 9pm

Weds 12:00 – 2:00pm and 6:30 – 9pm

Thurs 12:00 – 2:00pm and 6:30 – 9pm

Fri 12:00 – 2:00pm and 6:30 – 9pm

Sat 12:00 – 5:00pm and 6:00 – 9pm

Sun 12:00 – 3:00pm

Looking forward to welcoming you to  
The Blue Bell Inn



Weaverthorpe Weebles are planning to return in October, looking forward to seeing you all!

### **THE STAR INN WEAVERTHORPE**



NOW OPEN FOR  
SUNDAY LUNCH

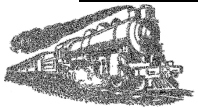
We are taking bookings for Sunday lunch, serving traditional roasts from 12-4pm every Sunday

Sunday evening service will now move to 6-8:30pm

Call us to book your table on 01944 738346

Marc

### **RAREY HALT SHOP & TEA ROOM**



The shop and tearoom are now open 5 mornings a week (9am – 1pm Thursday to Monday).

Tearoom booking is not essential, but given limited inside space we will take bookings should people wish to be certain that a table will be available.

We are taking orders for Derventio Bakery bread for delivery on Thursdays and Saturdays and Rafter's fruit and vegetables for collection on Fridays.

Please ring 01944 738282 for table bookings and orders.

We look forward to seeing you.

Jill and Pete  
01944 738282

### **Weaverthorpe Village Hall**



The Weaverthorpe Village Hall (VWH) 100 Club Lottery game for the 2019/2020 year is now over. Here

are the winning numbers for August – 16 (£20), 69 (£10) and 19 (£5).

The game has proved to be very popular and a great asset to the VWH funds. We are hopeful that our members will renew for 2020/2021 (keeping their original numbers) and possibly taking an odd one or two more!

Many members have already renewed - but a further reminder email and/or phone call will be sent out so that no one misses out on the September 2020 Draw.

Here is another reminder on how to join for those readers who would like to become members – simply email me on [martin.pearce54321@gmail.com](mailto:martin.pearce54321@gmail.com) or phone me on - 07971963797.

Together we can take it from there. But please remember that the 100 Club Year runs from 18<sup>th</sup> September 2020 until 20<sup>th</sup> August 2021 – so get your numbers before the September 18<sup>th</sup> start date. The cost for the year is £12 per number payable in advance.

Looking forward to hearing from you soon.

MARTIN PEARCE.

### **LUTTONS PARISH COUNCIL LITTER PICK**



An organised Litter Pick has been scheduled for two September Saturdays mornings i.e. 12 and 19<sup>th</sup>; in Helperthorpe, East Lutton and West Lutton.

Therefore, please, this is a request for VOLUNTEERS to help.

Ryedale Council have kindly offered to provide equipment - but you will need to provide your own gloves.

If you would like to volunteer then please contact Martin Pearce on 07971963797 or email -

[martin.pearce54321@gmail.com](mailto:martin.pearce54321@gmail.com)

Martin will need to know your name and contact details, the date, or dates, you are available and in which village, or villages, you would be willing to 'pick'.

Martin will then coordinate accordingly, arrange a meeting place and inform you of the details in due course.

Many thanks in advance.

Note - although this is an outside activity social distancing is still recommended.

### **Weaverthorpe Village Hall Re-opening**



The Weaverthorpe Village Hall Committee (VWHC) are pleased to announce that the hall has now re-opened - but, so far,

only for a Keep Fit class. Soon Knit and Natter and Zumba will be restarting too.

For everyone's safety and peace of mind we can confirm that the hall is fully Covid-19 compliant.

To ensure the safety of all users it has been necessary to introduce a new booking form which can be obtained from Trevor Thomson - contactable by phone on 01944 738804, 07972 132158 or email on

[weaverthorpevillagehall@gmail.com](mailto:weaverthorpevillagehall@gmail.com).

The next steps.

We are looking to restart Brunch Club. However, in order to comply with the requirements of Covid-19, the organisation of that will have to be somewhat different to that we all previously enjoyed.

We are currently planning for a restart date of 16<sup>th</sup> October this year. This, obviously, will depend upon what is happening both locally and nationally in respect of Covid-19. But, at least we are planning!

As far as is reasonably possible our aim is to ensure the absolute safety of everyone. In order to do this we will be meeting with everyone involved with each element of the Brunch Club service i.e. set up, cooking, order taking, serving, washing up and clearing away. Clearly none of these activities is as straightforward as they were previously and will require a deal of thought and suitable systems to be in place. However, it is our intention to get on to those aspects as soon as possible and, hopefully, have a detailed plan in time for the late September issue of The Warbler. In that issue we will set out how the Brunch Club will operate and how guests might make reservations - yes reservations will be required. So, watch out for the next 'Warbler'.

### **NIFTY 50s KEEP FIT Weaverthorpe Village Hall**



Starting Monday 14<sup>th</sup> September. First class 9.30-10.30, followed by a 2nd class 10.30-11.30. Due to Covid 19 class numbers are limited to 8 people per class, therefore if you

would like to join the class you will need to book your place. (Telephone Diana on 01944 738003). £5.00 per session. Class members to wear trainers and comfortable clothing.

The class is open to both men and women. A one hour session designed to improve strength, flexibility, balance, co-ordination and stamina.

If you are interested in joining the class you will need to fill in a health screening sheet. These will be available to fill in at the start of the class.

Measures have been set out to make the class Covid 19 safe while attending the class.



### Rillington Pre-school

"Outstanding" by Ofsted 2020

Term-time Sessions:

Monday - Wednesday 9.00am - 12.00noon,  
Thursday and Friday 9.00am - 3.00pm  
8.30am - 9.00am Breakfast club (£1.50)



Pre-School Mobile Tel: 07704289080  
Website: Rillingtonpreschoolplaygroup.co.uk  
Follow us on Facebook & Instagram

£12.00 for a 3 hour session

We take children from 2 years to School age

### Wold Newton

All Saints' Church  
6th September 10.00a.m. Holy  
Communion with Rev. Barbara Hodgson.  
For all other information please contact  
one of the churchwardens: Julie West  
01262 470546 or Carol Brunt 01262  
470838.

The church is open between 10.00 a.m.  
and 4.00 p.m. every day except Sunday.  
As of today, small choral groups will be  
allowed to sing during services, so  
'Harmony' is hoping to reform and refurbish  
their rusty vocal chords.

A concerned resident counted no fewer  
than 40 cars travelling West to East  
between 12.00 noon and 12.15 p.m. on a  
Friday. This ignores the usual tractor and  
lorry count and only some of the cars were  
observing the 30 m.p.h. speed limit. Young  
children are no-longer being allowed out to  
play near the road as a result. Could  
people please pass this round and raise  
awareness of the problem of speeding  
through the villages.

Wold Newton Parish Council has  
purchased and distributed celebratory V.E.  
Day mugs for every child in the village. We  
had a good day in which everyone was  
involved in the celebrations and it is to be  
hoped that the children will remember the  
occasion. (See picture on left).

### MacMillan Coffee Morning



Just a note to say I  
will not be doing my  
usual MacMillan  
Coffee Morning this  
year.  
However, this will not  
stop me fundraising!!

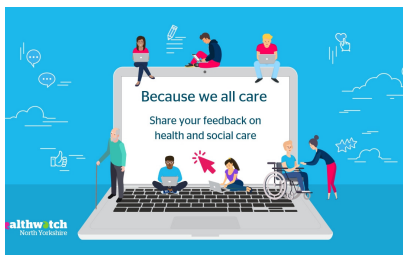
I decided it would be too difficult to go ahead  
for obvious reasons. Even an event in the  
garden or in one of our sheds posed  
difficulties because of the amount of people  
who may attend all at once. So.....I'm  
appealing to your generosity to still donate to  
this wonderful charity as Cancer does not  
stop when Covid strikes.

If you could all send a donation based on  
what you would normally spend on for  
instance, ingredients for any cakes you would  
bring, perhaps what you would spend on the  
day and it will still make a massive difference.  
I would then let you know the total and just  
maybe we could still come somewhere near  
the huge amount you donate every year. I  
have even thought of a system to still use Gift  
Aid!

You could donate in the form of a cheque  
made payable to Macmillan Cancer Support  
and post it to me or I can send you my BACS  
details and I will pass the payment on. Then  
hopefully next year, we will be back to  
somewhere near normal and we can all meet  
together, safely again.

Carol Botterill, Westfield Farm, Wold Newton,  
Driffield, YO25 3HY Tel: 07814 770347.

Email: [bottwfarm@aol.com](mailto:bottwfarm@aol.com)



### Help health and social care services recover from COVID-19 #BecauseWeAllCare

Healthwatch North Yorkshire is urging people to share their experiences of health and social care to help services recover from the COVID-19.

Nearly five months since the coronavirus pandemic took hold, two thirds of people in England say they are more likely to act to improve health and social care services since the outbreak – and you can help improve care in North Yorkshire by joining our campaign #BecauseWeAllCare.

Healthwatch North Yorkshire is the independent public voice for people using local health and social care services across the county. We listen to what people like about services and what could be improved. We share your views with those with the power to make change happen. We can also signpost you to local services and support.

Thank you again to everyone in the Great Wold Valley Area who worked with us and shared their views at the start of this year. We're hoping to publish our report in the coming weeks.

Our new campaign aims to help services identify and, more importantly, address issues people are experiencing with their care. While NHS and social care services are doing everything that they can to support you and your loved ones, they need our help to know how they can improve.

You can get involved with #BecauseWeAllCare by telling us your views about how health and social care support can be improved. To take our quick survey, visit [www.healthwatchnorthyorkshire.co.uk](http://www.healthwatchnorthyorkshire.co.uk) or call 01904 552687 (we're happy to ring you back).

## THE GALLERY

### 15th August -15th September

Exhibition by  
Sue Hone Titled 'Sea & Sky'



After lockdown I have explored the East Coast for inspiration and hopefully you will see many places you recognise. If you know my work, I always hope to capture the essence of the places I paint and I love using strong colours and simplifying what I see. I was very pleased when another artist caught sight of my new painting of Runswick Bay whilst it was at the printers and said, 'Oh Wow, that's Runswick Bay but it isn't!!' That is exactly what I want people to see and why most of my paintings start with the word 'Maybe' in the title.

The title of the Exhibition is 'Sea and Sky', both subjects I am obsessed with.

Sue x

[www.thegallerymalton.co.uk](http://www.thegallerymalton.co.uk)

## WHARRAM LE STREET

There will be a parish council meeting at 7p.m. on Tuesday September 15th. To be held in Wharram Parish Church. If anyone in Wharram has an item they would like to be discussed could they please let me know by September 1st. Social distancing and masks obviously if people wish to attend. You can communicate via the Wharram WhatsApp. Or [kay.roger@hotmail.co.uk](mailto:kay.roger@hotmail.co.uk)

Roger Kay.

Bereavement Care in York & North Yorkshire

### WE NEED VOLUNTEERS IN YOUR AREA

If you are a good listener  
Interested in helping other people  
Have a few spare hours

We would like to hear from you  
Webinar training course, free of charge,  
starting in September



*Somewhere to turn when someone dies*

Call now

Telephone: 01937 834702

E-mail: [york@cruse.org.uk](mailto:york@cruse.org.uk)

Registered Charity No. 638709  
Royal Patron: Her Majesty the Queen

### Weaverthorpe CE (VC) Primary School

#### Nursery in School

We have a fabulous  
EYFS class within  
the school.

Is your child 3?

15 free  
funded  
hours per  
week

Also Available  
12 noon to 1pm  
stay for a hot  
meal and play  
until 1pm for  
£3.90 per day

8.45am to 12 noon

## "A Farmyard Escape"

will take place to raise money for  
**The Yorkshire Air Ambulance**  
Sunday 27th September 2020



Refreshments will  
be available



The "A" Team wearing pantomime costumes will walk a mile of the Yorkshire Wolds Way, ending up at The Middleton Arms, North Grimston about 3.30 pm. COME AND CHEER THEM IN!



And if you have not already sponsored them, take the opportunity to do so. The "A" Team and supporters will be out with their sponsor forms or donations can be sent to:  
Ann Baron, The Old School House, Thorpe Bassett, Malton, YO17 8LU  
Cheques payable to "The Yorkshire Air Ambulance"

Grateful thanks to The Kirk Theatre, Pickering



The  
Wolds and Vale  
Federation



The Wolds and Vale Federation of schools have a  
limited number of nursery places available for  
2- and 3-year olds in September 2020

Check out if you are eligible for free childcare on the website

**Childcare Choices** <https://www.childcarechoices.gov.uk/>

If you would like a place, please email us for more details

[admin@luttons.n-yorks.sch.uk](mailto:admin@luttons.n-yorks.sch.uk) [admin@sherburn-pri.n-yorks.sch.uk](mailto:admin@sherburn-pri.n-yorks.sch.uk)

If you're looking for some simple, fun activities for kids, from  
newborn to five check out the following -

<https://hungrylittleminds.campaign.gov.uk/>



Anna Freud National Centre for Children and Families have created  
a Self-Care Summer Primary Pack designed to help children look  
after their mental health and wellbeing over the summer 🐾

<https://www.annafreud.org/schools-and-colleges/resources/selfcaresummer-primary-pack/>

And finally to all our wonderful families, we have missed seeing  
you all and are looking forward to seeing you again soon.

<https://www.woldsandvalefederation.co.uk/>



## Could you offer 'help at home' to people in your neighbourhood?

People in your community need help at home. This might be because they are older, unwell, disabled or just need a little bit of help to remain independent. We can support local people to help other local people.

- ✓ Got some time on your hands or looking for part time work?
- ✓ Ever fancied becoming self-employed or setting up your own small community enterprise?
- ✓ Are you already helping people and would like to do more?
- ✓ Do you need help to turn your ideas into reality?

### The 'help at home' project

We can help you to work on a self-employed basis or set up and run your own small enterprise offering help at home for people in your community. This initiative is focused in the Ryedale district.

### Support from the project

Community Catalysts runs a development programme which can:

- offer you a friendly and supportive point of contact to explore ideas
- support you to become self-employed or to develop your small community enterprise
- give you practical information on regulation and training
- tell you about opportunities in the health and social care sector
- direct you to other organisations who can help



Get in touch contact Kathy Peacock on

[Kathy.peacock@communitycatalysts.co.uk](mailto:Kathy.peacock@communitycatalysts.co.uk) or phone 07503800094 or through Facebook <https://www.facebook.com/communitycatalystsryedale>

Also, look at the Small Good stuff website <https://www.smallgoodstuff.co.uk/north-yorkshire/> so you can find people who might be able to offer the support you might need.