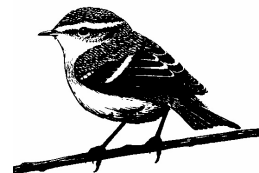


Warbler



A View from Ryedale House



There is some light at the end of the tunnel for those areas suffering from slow broadband connections. SFNY at North Yorkshire County Council recently received additional £12million pounds of funding. It could however take up to 2018 for the programme to be completed by SFNY and BT and even then some of the more remote areas within Ryedale may not benefit.

Separately the government has been operating a scheme that provides grants of up to £3,000 for all types of businesses including farms, tourism, sole traders and social enterprises. In collaboration with City of

York through Digital York we have been able to extend this scheme to cover test areas in within the Wolds that currently do not have access to fibre broadband.

Wireless broadband will be used and LN Communications limited has been selected as the provider. It is a requirement that businesses register for the grant which closes in October. Time is short so please contact me should you require additional information.

Once wireless broadband is in operation, households will be also be able to access the service, however, there will be a connection charge and further details to follow.

The trial postcodes are YO17 8BN – Duggleby; YO17 8DB Kirby Grindalythe, YO17 8HP Wintringham, YO17 9TG & YO17 9LS Thixendale and YO17 8LU Thorpe Bassett.

With respect to roads, I have had a preliminary meeting at North Yorkshire County Council and am currently talking to a mobile telephone mast operator. More to follow in my next report.

Regards

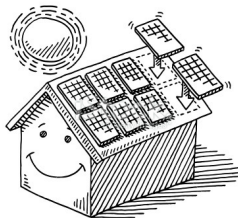
Tharik Jainu-Deen — District Councillor - Wolds

Final copy date 18th October for the November issue to:-
Trevor Thomson
Gypsey Cottage, Main Road, Weaverthorpe, YO17 8EY
Telephone: 01944 738804
Email: warbler@live.co.uk

(DISCLAIMER: Any correspondence/articles printed in the Warbler are entirely the responsibility of the contributor)

The Warbler is available on the Villages Website.

FREE SOLAR PANELS FOR RYEDALE RESIDENTS



Yorkshire Energy Partnership and Ryedale District Council have teamed up to offer free solar panels to Ryedale residents. The scheme, which is the first of its kind in the area, is funded by a private investor who re-coup their investment through the government backed feed in tariff scheme. Residents benefit from the free electricity provided by the solar panels.

Solar photovoltaic panels use daylight to generate electricity for your home and can reduce your electricity bills by £300 a year.

We can also provide advice on other renewable technologies such as ground and air source heat pumps which can provide heat for your home and qualify for the Renewable Heat Incentive payments from the Government.

EVENT DETAILS Tuesday 6th October, 3pm until 7pm at Weaverthorpe Village Hall, Main Street, Weaverthorpe.

To find out if your property is suitable or for more information contact Yorkshire Energy Partnership on 01904 545020

or visit our website www.yorkshireenergypartnership.org.uk

We can also discuss community renewable energy options with members of the communities in the area they can contact us or visit the event. Renewable options that are usually best considered are heat pumps and solar panels which are a fantastic way to provide community buildings with cheaper energy and to raise money for local projects, as community groups are eligible to receive non-domestic RHI and Feed-in Tariff payments.

Or a group of householders with south facing roofs could perhaps look at group buying for PV.

If you would like to know about the renewable energy options for a community building or community-owned project, please contact Harriett Richardson at YEP on 01904 545025.

Don't forget the Villages Website (<http://luttonsandweaverthorpe.ryedaleconnect.org.uk>)

The Wolds Valley Warbler provides a means of communication between the communities of: Wharram-Le-Street, Duggleby, Kirby Grindalythe, West Lutton, East Lutton, Helperthorpe, Weaverthorpe, Butterwick and Foxholes.



t : 01944 738 274
f : 01944 738 223
e : info@lhsleightholme.co.uk

Steel fabrication, erection and cladding

With grateful thanks to
L.H.Sleightholme for
paper and photocopying
facilities & Richard
Ogden, West Lutton for
additional paper supplies.



Domestic and Commercial work
Fully Insured

Richard Ogden

Tel: (Eve) 01944 738710 (Day) 07747 010777
Email: richard@ogdenservices.co.uk

THE WOLDS VALLEY CHURCHES

Services for the Month of October

Anglican Churches

4th Oct	10.30	Harvest Service at St Mary's West Lutton
	18.00	Harvest Service at St Mary's Wharram
9th Oct	19.00	Harvest Supper at St Andrew's Weaverthorpe (With guest preacher).
11th Oct	09.00	Matins at St Andrew's Kirby Grindalythe
	10.30	Holy Communion at St Peter's Helperthorpe
	10.30	Morning Prayer at St Mary's Wharram
	10.30	Morning Prayer at St Andrew's Weaverthorpe
16th Oct	19.00	Harvest Service at St Peter's Helperthorpe
18th Oct	09.00	Holy Communion at St Mary's West Lutton
	10.30	Holy Communion at St Mary's Wharram
24th Oct	13.00	Wedding (Terri & Martin) at St Andrew's Kirby Grindalythe
25th Oct	09.00	Holy Communion at St Andrew's Kirby Grindalythe
	10.30	Holy Communion (trad) at St Andrew's Weaverthorpe
	17.00	Evensong at St Peter's Helperthorpe

Baptisms, Weddings, Funerals and other enquiries should be directed to the
Rev Andy Bowden 01944 738814 or email andy@woldsvalley.plus.com

For parishioners, your first point of call on all church related matters should be your churchwarden.

Wolds Valley Methodist Church, Weaverthorpe

(Serving the whole Wolds Valley)

It has been decided that services will no longer be held here and we are having a closing service on Sunday 11th October 2015 at 3pm. We would appreciate prayers for those who have worshiped here regularly and are now unable because of age or infirmity to come to Chapel any longer. It is very sad that after 200 years of worship on this site that regular services can no longer be sustained. The closing service will be a Harvest Thanksgiving and will be led by Rev Denise Free and Mrs Christine Fenwick and there will be tea afterwards.

There will be a coffee morning and Police surgery on Monday October 12th.

Baptisms, funerals or other enquiries should be addressed to:

Rev Denise Free — Tel: 01723 512168

St Nicholas's Church, Butterwick

2nd Oct	18.30	Harvest Festival at St Peter's Langtoft , President and Preacher, Rev. Jackie Tonkin.
4th Oct	10.00	Trinity 18 Benefice Harvest Eucharist at St Peter's Langtoft , President and Preacher, Rev. Jackie Tonkin.
8th Oct	19.00	Harvest Festival at St Nicholas's Butterwick , President and Preacher, Rev. Jackie Tonkin.

Notes for your diary:-

7th Oct	12.30 till 16.00	Afternoon Preview of 'Captain Tortue' (French Fashion Designer) 'Autumn Collection' of Ladies and Children's Clothes . All welcome. At Langtoft Church Rooms. (Proceeds to Butterwick Church). 'Ladies come and peruse your Winter Wardrobe over Tea & Cakes!' Contact:- Gill Buckley 01377 267054
15th Oct	19.00	P.C.C Meeting at East End Farm, Butterwick .
30th Oct	11.00 till 12.00	'Coffee with the Curate' at Thwing. (Please feel free to come and join us for coffee/tea and scones). Contact:- Rev. Jacki Tonkin 01377 267149.
31st Oct	09.30	'Men at The Mill Breakfast Club' . New faces welcome for a chat over coffee and 'bacon butties', at The Old Mill, Langtoft. Contact:- Geoff Tonkin, tel. 01377 267321 or Rod Buckley, tel. 07748 755607.

Baptisms, weddings, funerals or other enquiries should be directed to:

Rev Jacki Tonkin — Tel: 01377 267149

St Leonard & St Mary's RC Church, Malton

Masses at St Leonard & St Mary's take place at the weekend at 6.30 pm on Saturdays and 9.30 am on Sundays and various other services are held throughout the week.

Priest is Father Tim Bywater while Mrs Sue Westmacott is the pastoral assistant.

Address: Church Hill, Malton, YO17 7EJ. tel/fax: 01653 692128
email: stleonards@tiscali.co.uk

St Andrews Weaverthorpe

Everyone is welcome to join us at our Harvest Festival on Friday 9th October At 7pm, followed by a bring and share supper.

If you would like to help decorate the Church, or donate produce or flowers we will be meeting on Thursday 8th October at 2pm.

Produce will be donated to The Rainbow Centre after the service. For more details please contact the Church Warden, Gill Trowsdale on 01262 490148

INVITATION TO ALL RESIDENTS OF THE WOLDS VALLEY.

If you want or need to talk to your Vicar Andy Bowden he will be available every Friday afternoon approx. 16.30pm at St Andrews Church and will be delighted to speak to you. He will be available from 31st October.

Weaverthorpe

CRAFT AFTERNOONS

Weaverthorpe Village Hall
Commencing Tuesday 13th October
1.00pm — 3.00pm

£2 to include refreshments

Bring any projects that you have on the go - knitting, crocheting, card making or just bring yourself

It is hoped to get the village quilt put together on these sessions so any help you can give would be appreciated

For more information contact Norma Harrison 01944 738037



VICKY BENNETT SPONSORED CYCLE EVENT

Vicky Bennett completed her coast to coast on September 17th raising funds for Weaverthorpe Primary.

Vicky said "Everyone's support has been amazing what an adventure my husband and I had! There is still £ 249 left in the localgiving match fund pot so with that we could potentially still raise another £ 498! With our current total at £ 1714.50 we could reach a new total of £ 2127.50 with the matched funding! (Although matched funding only lasts until Sept 28th we are extending the localgiving site so people can still donate in October!). If you would like to us help achieve that please follow the link. Thanks everyone from me and on behalf of Weaverthorpe Primary."
<https://localgiving.com/appeal/sponsoredcycle>



(KAY-LEE)
by
NIGHT OWL (Arthur & Sheila)



SATURDAY 17th October
WEAVERTHORPE VILLAGE HALL
8pm - late
Bring & Share supper
All tickets £5 (limited number -
book early to avoid disappointment)

Any raffle prizes would be most welcome
No alcohol at this event please
Proceeds to the Yorkshire Air Ambulance

Contact: Mary McKinley 01944 738651
Norma Harrison 01944 738037



**Weaverthorpe Weebles
Toddler Group**

Meet Mondays
9.15-11.15 am
at Weaverthorpe School
(term time only).

Adults and tots welcome, come and have a
cuppa, a chat and some fun!
(Please park at the bottom of the hill)
Contact 01944 738389 for more details

**Yorkshire Country Women's Association
Weaverthorpe Branch**

Tuesday 13th October

This month we have arranged a trip to
the Scarborough Sub Aqua Club to see
the many artefacts that have been
retrieved from the sea bed and to have
a short talk and description of the
underwater world.



If you want a lift, or just need to know where to go, meet
at the Village Hall at 7pm.

We will park at the St Thomas Street Council Car Park
and walk down to the Old Town from there. The Club is
on St Mary's Street and they will be opening the bar for
us.

All friends and relatives are welcome to join us to enjoy
this rarely offered experience

For further details ring Norma 01944 738037

Penny House, Chair
01944 738841

Jane and Julie's Walks



These are usually 4 to 5
miles
7th October
Great Givendale.

Meet Weaverthorpe village
hall for car sharing at 9.30

21st October

Local walk.
Meet Weaverthorpe village hall.

All times are 9.30
Please bring a small snack and a drink
Walkers take responsibility for their own
safety

Everyone welcome!
Call Jane on 738831

ZUMBA

Zumba is back in Weaverthorpe. Come
and join the party on Wednesdays from
6.45pm to 7.45pm. Have fun learning
our new dance routines. Charlie will
guide you through the steps while you
get a workout and burn loads of calories
without even knowing it. Check out my
Facebook page 'Charlie's Zumba' or
phone 07746 485138 for more details.

PILATES

Pilates has restarted, with emphasis
on floor work.
Monday's at 1.30pm. Weaverthorpe
village hall Dianne gives personal
attention and targets core strength to
eliminate back problems.
It is fun and relaxing!



Saturday 10th October

Weaverthorpe Village Hall, YO17 8HA.
1.00 pm - 2.30 pm

Admission Adults 50p.
Accompanied Children free.

Jumble may be brought to the Hall
On Friday 9th October 7.30pm - 8.30pm
Or Saturday 10th October from 11.30 am
Or to arrange a collection
call 01944 738804
Sorry we cannot accept electrical goods.

Proceeds to be divided between
Weaverthorpe C of E Primary School and
Weaverthorpe Countrywomen's Association

Weaverthorpe Village Hall

A big thank you to the Weaverthorpe and District
Produce Show Committee who made a significant
contribution to the roof fund.

**FIRST AID FOR PETS
Fund raiser for Ryedale Dog
Rescue**



Would you know what to do if
your dog required first aid
treatment?

This accredited course is
being presented at
Weaverthorpe Village Hall

On Thursday 22nd October at 6.30 until 9pm

Course content: The course provides you with basic
skills to carry out immediate first aid & potentially
save life whilst waiting for veterinary attention.

**Presented by Caroline Clark: A Registered Veterinary
Nurse & A.B.T.C. Registered Clinical Animal
Behaviourist**

**Cost: £30.00 p.p. inc. light refreshments, course
notes and certificate of attendance
50% of all proceeds to be given to Ryedale Dog
Rescue**

**To book a place contact Caroline 01944 738510
email caroline.clark@peteducationandtraining.co.uk**

Luttons

Luttons Quiz



The quiz will take place in the School
Hall at West Lutton on Friday 23rd
October. Start time is 7.30pm. Please
bring along your own drinks and if you
wish to please bring along some food
for everyone to share during the quiz.

Please note that we can not allow anyone under the
age of 18 to attend the quiz as alcohol will be
consumed.

**Yorkshire Country Women's Association
Luttons Branch**

September meeting saw a trip to Kirby
Grindalythe for a talk on 'Post Boxes'
the speaker Colin gave us a really
fascinating talk on the history of the
British postal service with a back
ground of British postal history. The
afternoon continued with afternoon tea,
we are grateful to Barbara for a delightful afternoon.



October continues with a 'Mystery Tour' on Wednesday
afternoon on the 21st. At this time it's still a mystery but
details to follow.

If you would like to join us ring Marian on 738501 for
details.

Luttons CP School

has spaces available for
children aged 3-4 years old in
their Nursery. Led by a highly
qualified early years
practitioner, the team at



Luttons offer a warm family atmosphere with
creative, child-led fun and learning.



Why not use your all, or
some, of your free
child-care hours with us as
we offer morning sessions
Monday to Friday.

Come and see what we
have to offer. Please call

01944 738232 for more details.

Together We Care, Learn and Grow

**Butterwick
& Foxholes**

**Success for Scarecrow Festival
in Butterwick and Foxholes.**

Our first Scarecrow event was a brilliant success. Thank you
to everyone who participated. Villagers, both young and old,
really went to town and produced some excellent scarecrows
on the theme of nursery rhymes. We had Incey Wincey,
Humpty Dumpty, Mary Mary amongst the contenders for the
favourite. The narrow winner, voted by the public, was Two
Little Dicky Birds. [Fly away Peter, Fly away Paul].
Congratulations to Lizzie.

Our thanks to the organisers for having the vision to inspire
and remind us what a lovely and special place we live. The
two villages combined to open the weekend and share a
lovely summer evening with music and food and drinks in the
lovely setting of Butterwick Parish Church.

We were so pleased that the ever - popular local musical
duo Paul and Salvo came making the evening even more
special. They played in the marquee whilst children tried a
selection of traditional games such as quoits and croquet.
Folks were drawn from many villages along the Wolds and it
was a pleasure to see the whole community just enjoying
themselves.

Proceeds of a whopping £784.00 from the weekend are to
be shared between Butterwick church and the Foxholes
Community Hall. All the contributions of raffle prizes are very
much appreciated, with a special thank you for support from
the Blue Bell Inn, Wolds Stoves, Foxholes Garage, The Star,
Wold Top Brewery and Bannisters farm shop. The large and
varied number of donations from individuals ensured the
raffle was hugely popular.

In the refreshment tent at Butterwick over the weekend there
were further surprises. Thanks to the kind donations of many
scrumptious cakes, we were able to augment the drinks with
wonderful homemade baking, and even offered a
very popular cake stall.

Kirby Grindalythe

New Parish Website

A new website has been set up for the Parish of Kirby Grindalythe and Duggleby.

It can be accessed at <http://kirbygrindalytheduggleby.ryedaleconnect.org.uk>

Please have a look and if you have any suggestions or information that you think should be included on the site, please contact the editor via the Contact Tab.

Post Harvest Supper

Wine and savouries to be held at Low Mowthorpe Farm House thanks to Judith and Andrew. All welcome.

Sunday 4th October at 7.00 pm.

Supper £6.00 per head
Call 738049 or 738555



Kirby Grindalythe Residents Meeting

**Monday 16th November 2015
at 7pm - Village Hall
106 Agreement Fund
Hogg Builders (York) Ltd**

Following the recent resident's survey and requests for ideas of how to spend the funds received from the Hogg Builders (York) Ltd building project the Parish Council have called a meeting of all the residents of Kirby Grindalythe Village. Residents will have an opportunity of reviewing the ideas submitted with a view to deciding which project they would like to go ahead with.

You are cordially invited to
Kirby Grindalythe Luncheon Club

This takes place the first Friday in each month from 12 noon to 2.00pm at Kirby Grindalythe Village Hall. Remaining dates for 2015 are as follows:- 7th August, 4th September, 2nd October, 6th November and 4th December
Open to all residents of the Great Wold Valley from Wharram Le Street to Foxholes. No age restriction!
Transport to and from the event will be available, if required.
Many thanks to the North Yorkshire County Council's Stronger Communities Programme for their partial funding of this project.

Wharram le Street

Parish Council

The parish council AGM will be held on Wednesday 7th October 7.00 pm. In Wharram Parish Church.

All residents very welcome.

We also would like a few more people to come onto the parish council. We can take three more residents. Please contact Roger on 01944 768541 or discuss at the meeting.

Roger Kay. Call 738049 or 738555

4

General News

Humberside, Lincolnshire and North Yorkshire Community Rehabilitation Company Ltd (HLNY CRC)

Vacancy : Casual Community Payback Supervisors

SALARY: £11.42 per hour plus pro rata holiday pay

LOCATION: Various locations across North Yorkshire

HOURS: As and when required, mainly weekends

We have vacancies for Casual Supervisors across the North Yorkshire Area to work on an as required hourly basis. The role involves supervising offenders sentenced to Unpaid Work Orders by the courts.

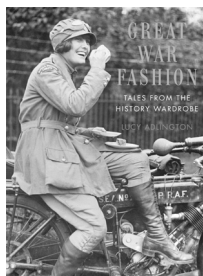
This is an exciting opportunity to work closely with offenders on visible community payback projects and make a difference in the local community. The successful applicants will possess personality and leadership skills to manage groups of offenders, teaching them skills and keeping them to task. You will require practical skills to enable you to supervise a range of tasks such as gardening, painting, decorating, catering, and retail work in charity shops.

A sound knowledge of safe working practices is essential along with an ability to work alone with diverse groups of people. You should possess a current driving licence, and have use of a car to travel to various locations.

For an informal discussion please contact: Liz Rushton on (01423) 566764, Ed Gray on (01904) 526000 or Karl Parkin on (01723) 366341.

The HLNY CRC is committed to increasing the diversity of our workforce, therefore applications from black and minority ethnic candidates are particularly welcome. We will treat all applicants, of whatever background, or sexual orientation fairly and will recruit on merit, in accordance with our equal opportunities policies.

Please note the successful candidate will be required to complete a DBS check.



GREAT WAR FASHION is a marvellous evening of entertainment as historian Lucy Adlington, explores and recounts the experiences of those amazing women, who lived under the shadow of war and who were irrevocably changed by it. Lucy and co will demonstrate the

genuine fashions they wore. Try on some of the shoes from a century ago! Maybe a pair of silk sensations from Paris, or wooden clogs with metal cleats from the factory yard. Or would your shoes be heavy with mud of a frontline hospital ... or stuck with turf from a football pitch? Please join us for a wonderful evening of entertainment.

RAFFLE ON THE NIGHT

FIRST PRIZE A GENUINE CERAMIC POPPY FROM THE TOWER

The event includes a light supper served in our own (special for the night) tea room
Wine, soft drinks & Beer from Maltons' own BAD SEED micro Brewery available on the night
7pm 27th November
West wing Malton school

TICKETS £10 per person
AVAILABLE FROM - MALTON SCHOOL 01653 692828

Horsley Florists, Market Square, Malton; or delivery available to Malton, Norton & York

RING 07812 938905 FOR DELIVERY cash on delivery.

All tickets presold to event.

All PROCEEDS TO FUNDING THE SCHOOL TRIP TO PERU, WHERE THEY WILL WORK IN LOCAL SCHOOLS

Flu clinics to be held at Sherburn and Rillington Surgeries



An appointment is required for the Surgery Flu clinics.

Rillington Surgery:
5th October 2.30-6pm
19th October 3-6pm

Sherburn Surgery:
8th October 11-3pm
16th October 2-6pm

Village Hall flu clinics 13th October
No appointment necessary:
West Heslerton at 9am
Staxton at 10am
Foxholes 11.30am (Scrutons Board Room)
Weaverthorpe at 12.30pm

SLEDMERE Children's Halloween & Pumpkin Hunt

Sun 25th

October (11.00 am to 4.00 pm)

Based within the Walled Garden will be a pumpkin trail, face painting and lots of Halloween craft activities.



Pumpkin Trail

Tue 27th October to Fri 30th October (10.00 am - 5.00 pm)
Pumpkin trail around the Gardens.

Contact:

Lisa Bradley
01377 236637

Sledmere Bonfire and Fireworks Spectacular - 31st October 2015



Sledmere House is excited to announce that we're holding our first ever public Bonfire and Fireworks display on the **31st October 2015**. We've teamed up with the award winning 'Fireworkers' of

Driffield who are working hard to create a spectacular 'Night at the Movies' themed Fireworks display accompanied by some of the most iconic movie theme tunes both you and the children will instantly remember.

The setting really couldn't be better, there will be a childrens Funfair, Food Stalls, a licence Bar and the Bonfire which all overlook the Big House that is the back drop for our display.

The entrance is at Castlegate situated on the easterly side of Sledmere Village (YO25 3XR) where you will be directed straight into the **free car park**.

Gates open at 6pm, the Bonfire will be lit at 6.30pm and the Fireworks display will start at 8pm.

You can purchase your full price tickets on the gates but if you purchase your tickets in advance online at www.sledmerehouse.com or in the Sledmere Gift Shop in the Sledmeregrounds they will be discounted.

Tickets on the gates are priced at:

Adult: £6.00 Cons: £5.50 Children: £4.00
Family ticket (2 adults 3 children): £20.00