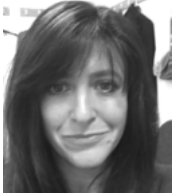


# Warbler



## A View from Ryedale House



It has been a hectic but enjoyable few months settling into my new role as a District Councillor. I have made contact with most of the Parish Councils and hope to get to the rest of the meetings over the summer months.

I have acquainted myself with various members of the Council staff and have had a meeting with the Community Officer for The Wolds, Bridget Skaffe. This was enlightening as her role covers a wide range of areas, not least the issue of dog fouling which appears to be a great concern for a lot of The Wolds villages. If you have any issues she can be contacted either through myself or on RDC website.

This week I attended the North Yorkshire Police, Fire and Crime Panel as a representative for Ryedale District Council. It was an interesting meeting and part of the agenda addressed the issue of Rural crime and how it differs to crime in other areas. It has been found that whilst a lot of attention has been given to property crime, crimes against the person including domestic abuse have been overlooked. This is being addressed and if you have any issues in the meantime please don't hesitate to contact me.

The turmoil continues in Government and whilst we will have a new Prime Minister next week, the future is by no means clear. I will keep my attention on local matters and if you have any concerns please contact me.

Tracie Middleton

Final copy date 18th of the month for the following months issue to:-  
Trevor Thomson  
Gypsy Cottage, Main Road, Weaverthorpe, YO17 8EY  
Telephone: 01944 738804 or 07972 132158  
Email: woldsvalleywarbler@gmail.com

(DISCLAIMER: Any correspondence/articles printed in the Warbler are entirely the responsibility of the contributor)



### WEAVERTHORPE & DISTRICT PRODUCE SHOW

Saturday 24th August 2019 at 2.15pm  
Weaverthorpe Village Hall

Entries at the Village Hall, 7-9pm Thursday  
22nd August 2019  
Schedules available from:  
Mrs Anne Downes, tel: 738637  
By e-mail from penelope.house@btinternet.com  
Download:  
www.luttonsandweaverthorpe.ryedaleconnect.org.uk



### YORKSHIRE COUNTRYWOMEN'S ASSOCIATION



We are a group of ladies of all ages who live in Yorkshire, all with different talents and interests merging into 73 branches throughout the county.

Whether your interests are crafts, competitions, outings, gardening or just fun and friendship, we hope we offer something to suit all tastes.

If you think you would enjoy being part of the YCA family and would like to join or visit the Weaverthorpe Branch, please contact Sue Thomson on 01944 738804 for information. We meet on the second Tuesday of the month at 7.30pm in Weaverthorpe Village Hall. Fee for guests is £3.50 per meeting.



Canal Boat Trip



Fire Station Trip



Flamingoland Trip



Garden Visit



### Ganton & District Horticultural Association 41st ANNUAL PRODUCE SHOW

Sunday 1st September 2019  
Ganton Village Hall

Show opens at 1.30pm or on completion of judging

Presentation of prizes 4.00pm

FREE ADMISSION  
Refreshments available

Schedules available via email from  
ihallways@hotmail.co.uk

**Don't forget the following Websites :-**  
Luttons & Weaverthorpe (<http://luttonsandweaverthorpe.ryedaleconnect.org.uk>)  
Kirby Grindalythe & Duggleby (<http://kirbygrindalythe.duggleby.ryedaleconnect.org.uk>)  
Foxholes with Butterwick Parish Council (<http://foxholesbutterwickpc.co.uk>)  
All Saints Church, Wold Newton ([www.allsaintschurch-woldnewton.com](http://www.allsaintschurch-woldnewton.com))



t : 01944 738 274  
f : 01944 738 223  
e : [info@lhsleightholme.co.uk](mailto:info@lhsleightholme.co.uk)

Steel fabrication, erection and cladding



**Domestic and Commercial work**  
Fully Insured  
Richard Ogden

Tel: (Eve) 01944 738710 (Day) 07747 010777  
Email: [richard@ogdenservices.co.uk](mailto:richard@ogdenservices.co.uk)

The Wolds Valley Warbler provides a means of communication between the communities of: Wharram-Le-Street, Duggleby, Kirby Grindalythe, West Lutton, East Lutton, Helperthorpe, Weaverthorpe, Butterwick, Foxholes and Wold Newton.



Providing quality fuels and lubricants throughout North & East Yorkshire for over 25 years  
**DOMESTIC HEATING OIL**  
[www.amkfuels.co.uk](http://www.amkfuels.co.uk) - [info@amkfuels.co.uk](mailto:info@amkfuels.co.uk)  
Call Andrew, Mavis or James on **01377 229373**

*With grateful thanks to L.H.Sleightholme for paper and photocopying facilities & Richard Ogden, West Lutton & AMK Fuel Services for additional paper supplies.*

## Wolds Valley Benefice

- 3rd Aug** 1.30 pm Wedding Sarah & Christie St. Peter's Helperthorpe
- 4th Aug** 9.30 am Hdy Communion (said) St. Mary's West Lutton  
10.30 am Holy Communion St. Mary's Wharram Le Street  
2.00 pm Messy Church Weaverthorpe Village Hall
- 11th Aug** 9.00 am Matins St. Andrew's Kirby Grindalythe  
10.30 am Holy Communion St. Peter's Helperthorpe  
10.30 am A Quiet Time in Wharram (see advert) at St. Mary's Wharram Le Street
- 18th Aug** 9.30 am Family Holy Communion St. Mary's West Lutton  
10.30 am Sunday Café St. Mary's West Lutton  
6.00 pm Evensong St. Mary's Wharram Le Street
- 25th Aug** 9.00 am Holy Communion St. Andrew's Kirby Grindalythe  
10.30 am Holy Communion (said) St. Andrew's Weaverthorpe  
11.00 am Bible study St. Andrew's Weaverthorpe  
5.00 pm Evensong St. Peter's Helperthorpe

**Baptisms, Weddings, Funerals and other enquiries should be directed to the**

**Rev Andy Bowden 01944 738814 or email [andy@wddsvalley.plus.com](mailto:andy@wddsvalley.plus.com)**

**For parishioners, your first point of call on all church related matters should be your churchwarden.**

## St Nicholas's Church Benefice, Butterwick

- 4th Aug** 9.15am at All Saints, Thwing
- 11th Aug** 11.00am Benefice Service at St Peter's, Langtoft
- 18th Aug** 'TRIBFEST' Family Service at Sledmere House
- 25th Aug** 11.00am Benefice Service at St. Nicholas's Butterwick
- 31st Aug** 9.15 am 'Men at The Mill' Breakfast Club! The Church Rooms, Langtoft.  
All men from the local villages are invited to come along. Please join us for Bacon sandwiches/coffee and some convivial company and lively chat!  
Contact :- Geoff Tonkin Tel:- 01377 267149'

**All enquiries should be directed to:- Rev'd Stuart Grant :- 01377 257712**

## All Saints Church, Front Street, Wold Newton

- 4th Aug** 10.00 am Holy Communion.
- 11th Aug** 6.00 pm. The Big Sing - choose your favourite hymns
- 18th Aug** 10.00 am Morning Worship
- 25th Aug** 10.00 am. Combined Benefice Holy Communion at Rudston.

**This ancient and interesting church is kept open during the day for visitors.**

**All enquiries should be directed to: Rev Barbara Hodgson - Tel: 01262 470873**

## Sherburn Methodist Chapel

- 4th Aug** 10.30am Service led by James Greig from the Leprosy Mission followed by Lunch for Leprosy at 12noon. There will be a free will offering during lunch for the Leprosy Mission. Come to either or both.
- 11th Aug** 10.30am Service led by Bruce Clark
- 18th Aug** 10.30am Service led by The Worship Team.
- 25th Aug** 10.30am Holy Communion with Rev Brian Fitzpatrick.

No Messy Church in August.

No Luncheon club in August but all are invited to Lunch for Leprosy on 4th.

Tuesday Coffee Morning 10-11.30am Kind donations for the coffee will be given for goods for the Chapel kitchen. £200 has been given to Water Aid in memory of Mr Pamela Wild. Thank you so much for your generosity.

Craft Club on Thursdays at 1.30pm.

**All enquiries to Rev. Dr. Kevin Ridd on 01723 512168**

## St Leonard & St Mary's RC Church, Malton

Masses at St Leonard & St Mary's take place at the weekend at 6.30 pm on Saturdays and 9.00 am on Sundays and various other services are held throughout the week.

The Bishop of Middlesbrough Diocese, the Rt Rev Terry Draine, visited St. Mary's RC Primary School, which is linked to St Leonard & St Mary's RC Church, Malton, to bless the new extension and to celebrate the End of Year Mass. All parishioners were warmly welcomed to attend especially former pupils, parents, teachers and support staff. After Mass the school celebrated its Summer Fayre.

Sea Sunday was celebrated at the St Leonard & St Mary's RC Church as part of the system whereby the Church prays for all those who live and work at sea. There was a collection at the end of Mass for Apostleship of the Sea, the official maritime welfare agency of the Catholic Church. It provides practical and spiritual support to seafarers visiting British ports and is dependent on voluntary donations.

At St Joseph's, Pickering, the Scarborough & Ryedale Carers Resource - "Carers Cuppa & Wellbeing Group" - meets every 3rd Wednesday of the month, 10-12 noon at Pickering Friends Meeting House. Drop in for a chat and a cuppa, meet other carers and make new friends. All carers welcome. For further information, please contact: 01723 850155, [staff@carersresource.net](mailto:staff@carersresource.net), [www.carersresource.net](http://www.carersresource.net).

**Priest is Father Tim Bywater while Mrs Sue Westmacott is the pastoral assistant.**

**Address: Church Hill, Malton, YO17 7EJ. tel/fax: 01653 692128**

**email: [stleonardsmalton@outlook.com](mailto:stleonardsmalton@outlook.com)**

## 'A Quiet Time in Wharram' Sunday August 11th at 10.30am

Do you feel at one with yourself, those around you and the wider world, or can life leave you feeling disconnected as you don't have the time or space to reflect? If the answer to any of the above is 'yes' come and join us for a 'Quiet Time in Wharram'. We will meet in Wharram Church, a beautiful building at the heart of the village welcoming those of any or no faith for over 1,000 years, which offers a timeless tranquillity.

Feel free to come and sit quietly, to breathe deeply and to reflect. If you would like to bring something which means a lot to you to share with others that would be most welcome but all you really need is yourself. 'A Quiet Time in Wharram' is not a religious service but a chance to step out of your normal life. We welcome absolutely everyone and also your ideas as this is very much an experiment. Of course, there will be coffee, biscuits and chatter afterwards!

For more information contact:-

Sue Hone at [susiehone569@gmail.com](mailto:susiehone569@gmail.com)

Or Sue Teal at [sue.teal@hotmail.co.uk](mailto:sue.teal@hotmail.co.uk)

## WOLDS VALLEY VOICES



We urgently need new members in all areas; Soprano, Alto, Tenor & Bass.

Our new M.D. is Charles Smith (Chas), who has a wide experience in conducting choirs and voice training. Do come along and give it a go. No auditions! Just enjoy the singing with a great bunch of people!

We meet at Weaverthorpe Village Hall on Wednesday evenings at 8pm to 9-30 pm.

For more details Tel: Ann Richards on 01944 738718 or Rod Buckley 01377 267054.

## Weaverthorpe



### **WEAVERTHORPE POST OFFICE**

Open 10am until 2pm  
Mondays and Thursdays  
Rarey Halt Tea Room & Shop

Please feel free to call us  
01944 738645

## Weaverthorpe Coffee Morning



Why not join us for coffee and cake every Monday morning at Garden Cottage (Rear of Church View) from 10.00am to 11.30am. We donate all money raised to various charities. Come and be part of it and help raise money too!

## Weaverthorpe Village Hall

**100 CLUB**

A new venture for everyone to feel a part of and enjoy.

Starting in September

we will be running a '100 Club' Lottery. Depending on the number of members there will be one monthly prize of £20. More Members = More Prizes.

Membership cost £12 pa (payable for the year in advance). To become a member you must be at least 16 years of age. There is no limit as to how many numbers you may have - either individually or as a family. For an application form contact Martin Pearce by email:

Martin.pearce54321@gmail.com

or by phone: 07971 963797.

## Weaverthorpe Weebles



Meet Mondays

9.00-11.00 am

at Weaverthorpe School  
(term time only).

All parents/carers welcome with children baby-5yrs, come and have a cuppa, a chat and some fun!

(Please park at the bottom of the hill)  
Contact Jill on 01944 738389 for more details.

Return 9th September.

Enjoy your Summer!!

## Friends of Weaverthorpe School



have a marquee available for hire, size 8m x 4m. The charge is £30 per hire. You must be able to collect and return it. Contact Jess Boyes on 07583 953862 for booking enquiries and more details.

## STAMPS

Friends are still collecting stamps. If you have any please bring them the school office and we will collect them from there. Thank you

Friends of Weaverthorpe school would like to say a big thank you to Rachel & Julien at The Star Inn for a fantastic 'Ladies Lunch' fundraiser. £281 was raised on the day from ticket sales and the raffle. Thank you also to Wolds Way Lavender, Rarey Halt tea rooms and Wold Top brewery for your kind donation of prizes.



Weaverthorpe Parish Council would like to thank all those who helped with the painting of the village green fencing in order to make it look respectable for Open Gardens and also those who donated materials.

## THE STAR INN WEAVERTHORPE



Quiz dates - 8th and 22nd August...

Meal Loyalty Cards - Don't forget to collect our brand new meal loyalty card next time you eat with us. These work well with our existing drink loyalty cards.

We open from 5pm Tues-Sat and 12pm Sunday now it's summer so come and join us for a beer or our new cider offering during summer.

Tel: 01944 738346

## Weaverthorpe Open Gardens

The weather was kind to us again! All the garden owners and our 256 visitors said what a lovely day they had and there were loads of comments on the feedback slips to say what a friendly village we are!!

Weaverthorpe Parish Council have been given £1349 towards the street lighting which is a great contribution.

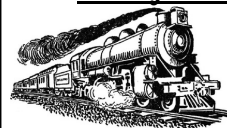
Other funds were raised for various village organisations which gave us a grand total of £2138 for the whole event.

All the scarecrows were fabulous but there had to be a winner which was the Spaceman and the lunch for two at the Bluebell was for the first time won by someone from the village.

Many, many thanks to all those who made it such a successful event. We dare not start naming people in case we miss somebody out but you all know who you are!!!

A silver necklace was found in one of the gardens, if it is yours please get in touch. Penny and Jeff House 01944 738841

## Rarey Halt Tearoom



Donations of second hand books in good condition please

- raising funds for Yorkshire Air Ambulance.

## Luttons

### Friends Of Luttons School

Thank you to all who have supported us at events over the last 12 months. We have managed to raise an amazing £1918.65 which can help the school in many different ways. We have a number of events lined up for next year so please do come along to support us again.

Dates for your diary:

AGM - 13th September

Macmillan coffee morning - 27th September

Halloween Bingo - 18th October

Christmas craft fair - 30th November

## Luttons Makers



and

**Bakers Fair.**



West Lutton Church.

Saturday 3rd August. 11am to 3pm.

Please come along and enjoy a wonderful village day out including locally made crafts, recycled and dressed teddy bears, face painting, Cafe with home made cakes and buns, hot dogs and ice cream, wine making demo, tombola, bric-a-brac, books and much more!  
**FREE ENTRY!**

**Open 11am til 11pm**



### SUNDAY QUIZ NIGHT

Starts 8.00 p.m.

£1.00 per person

Free Supper

### FUNDAY MONDAY

Happy Hour

6.00pm to 7.00pm

Great deals on drinks.

### FOOD SERVED

From 1st August

Any Enquiries call 01944 738713 or Stevey on 07398 201270

Email: [threetunswestlutton@gmail.com](mailto:threetunswestlutton@gmail.com)

**Luttons Parish Council** is hoping to arrange some training on the use of defibrillators. If you would be interested in attending a short course could you please email the clerk at [clerkluttonspc@hotmail.co.uk](mailto:clerkluttonspc@hotmail.co.uk). We will then be in touch once we have more details.

## Sherburn

### Pathways Project



We are a group of volunteers working to improve access to green spaces and public rights of way throughout Sherburn.

We meet up on the first Saturday of each month at different locations throughout Sherburn.

2019 Dates

3rd August, 7th September, 5th October, 2nd November, 7th December  
(All dates are weather dependent)

Please check out our Facebook page for more updates

[www.facebook.com/SherburnPathwaysProject](http://www.facebook.com/SherburnPathwaysProject)

## Rillington

### Rillington Pre-School



Looking for Child Care in September?

Come and look around Rillington Pre-school "Outstanding" by Ofsted Term-time Sessions:

Monday - Wednesday 9.00am - 12.00noon,  
Thursday and Friday 9.00am - 3.00pm  
8.30am - 9.00am Breakfast club (£1.50)

Pre-School Mobile Tel; 07704289080  
Website: Rillingtonpreschoolplaygroup.co.uk  
Follow us on Facebook

£11.50 for a 3 hour session

We take children from 2 years - School age

## Foxholes

### FOXHOLES LIBRARY



August times and dates.

The library will be open Saturday 10th and 24th August. 10-12pm. Thanks to a large number of recent donations and purchases we are able to offer some great summer holiday reading.

Some books are part of a collection by the same author and you are welcome to take as many as you can carry in your suitcase. If you prefer, we have audio books and a large selection of jigsaws.

Always very popular, the jigsaws can be borrowed in the same way as books. Just return them when you are ready.

We offer a range of refreshments and everyone is welcome.

The hall is light and airy at this time of year and the views are wonderful.

There is plenty of parking and easy access to the hall.

### FOXHOLES COMMUNITY HALL

#### SATURDAY KIDS CLUB

Saturday 3rd August 2019

From:- 10.30am till 12.30pm

£1 per Session Pay on the Door  
'Summer Crafts'

(All Kids welcome with an Adult)

For Details Ring Kat 07585 504390

#### 'WHIST DRIVE'

(Second Tuesday of the month)

Next session Tuesday 13th August 2019  
2019 at 7.30pm start. Prizes for Winning Lady/Man

Beginners are welcome, totally relaxed atmosphere.

All Enquiries Rod :- 01377 267054 or  
07748755607

If you would like to hire the hall for any event, party, function or meeting, then please get in touch :-

All enquiries to : June Stephenson 01273 892711.

## Kirby Grindalythe



**JOB VACANCIES**  
CRANEDALE CENTRE  
KIRBY GRINDALYTHE  
MALTON YO17 8DB

#### **Baker/Breakfast Cook**

to work 2 shifts during the week.

#### **Sandwich maker**

for Wednesday and Thursdays.

#### **Pot Washer**

a couple of nights during the week.  
Sometimes required to work weekends.

#### **Evening Waitress/Waiter**

#### **Evening Cook**

to work Fridays 12 noon to 7 pm.

Due to the location of the Centre all applicants need their own transport. Applicants must be over 17 years of age and be reliable.

Experience would be advantageous although full training will be given and a uniform provided.

The suitable applicants will only be required to work during school terms and some weekends.

We are a residential centre primarily for 6th form students and adults.

See our website: [www.cranedale.com](http://www.cranedale.com)

Please contact Sue Taylor for an application form on

01944 738687.

Email:

[cranedaleadministration@cranedale.com](mailto:cranedaleadministration@cranedale.com)



You are cordially invited to  
**Kirby Grindalythe Luncheon Club**  
First

Friday of each month.  
12 noon to 2.00pm - lunch served at 12:15 pm.  
Open to all residents of the Great Wold Valley from Wharram le Street to Foxholes. No age restriction!

**NO LUNCHEON CLUB IN AUGUST**

#### HARVEST SUPPER

5th October 7 for 7.30pm  
Tickets £12.00

Call 01944 738555

#### Flower Arranging

#### Demonstration

with Gill and Ann  
Wednesday 11th September  
at 7.30pm

Supper and Wine £10.00

Ticket only

Call 01944 738555 for details

## Duggleby

OUR BIGGEST EVER

**CAKE**  
*and a cuppa*

Duggleby  
shelter

1st August 2019  
2pm

BRINGING NORTH YORKSHIRE TOGETHER

**BBC RADIO YORK**

## Wintringham

### WINTRINGHAM COMMUNITY HALL.

5th August 19th August 2nd September  
**Crafty Mondays** - Come along 10am till noon - Tea and Cake for everyone - Try new crafts or just call in for a chat - donation of £5 towards materials (all provided).

10TH AUGUST

#### **BBQ & SUMMER DANCE - 6PM**

Live Music by Loose Coverz  
Licensed Bar

Adults £10 - Children £5

Call Lisa for tickets

07969 227642

## Wold Newton

### Community Centre, Front St.

For information on regular Tai Chi, Dance and Keep Fit sessions please telephone 01262 470368.

Saturday 17th August

#### **Wold Newton and District Flower & Vegetable Show.**

Open to the public from 2.00pm.  
For schedule and entry form contact Mrs. Jean O'Neill, 1 Highfield Close, Wold Newton. YO25 3YW  
Tel.. 01262 470949.

Entries close 9 p.m. 13th August.

Sat. 31st. 10.00 - 12.00 noon

#### **Coffee, Cake & a Chat**

PLUS local produce and craft  
'Farmer's Market'.